



SEPTIEMBRE 2019
CITADELA

“Carola”

Torre B
Departamentos
B11 - B21 - B31 - B41

Área Habitable: 147.50m²

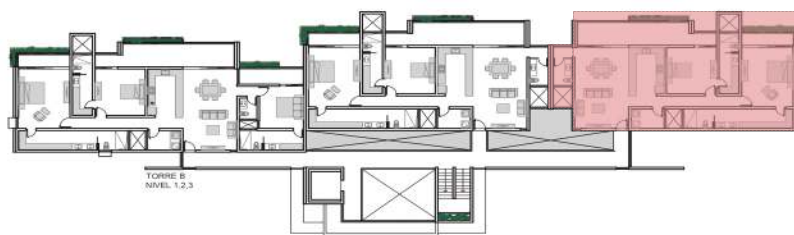
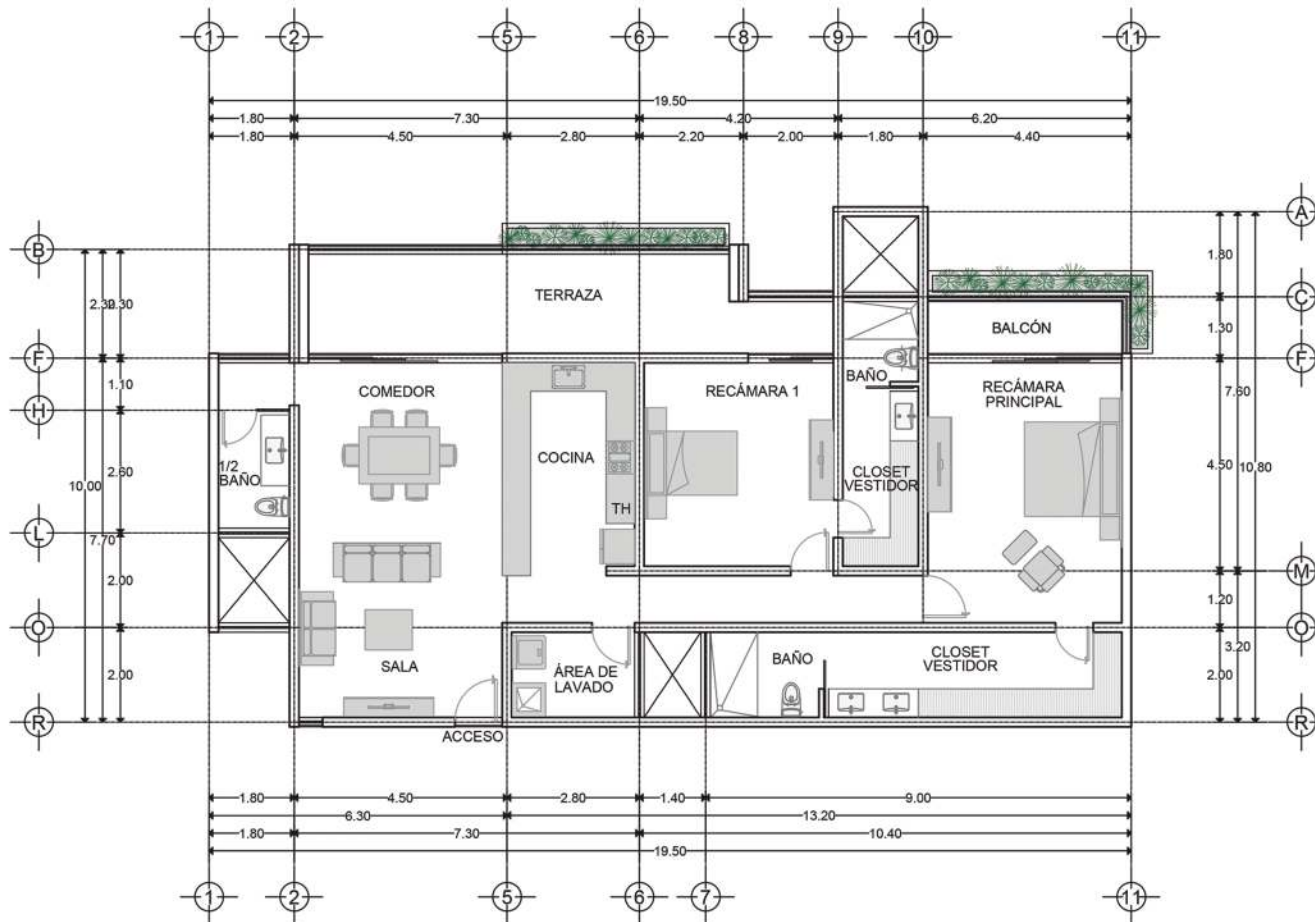
Terraza: 24.53m²

Balcón: 5.72m²

Cajones: 25.00m²

Área Habitable Total: 177.75m²

Área Total: 202.75m²



		B41
		B31
		B21
		B11

